

\$174,900 - 000 Orchard Drive, Boyne City

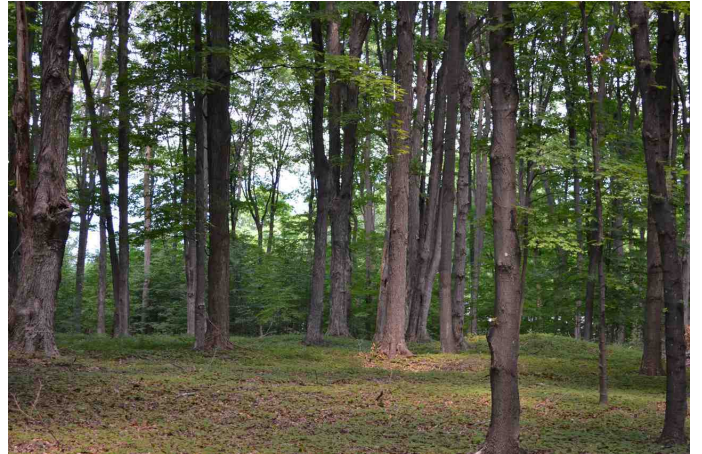
MLS® #461420

\$174,900

Bedroom, Bathroom,
Lots/Land on 3.00 Acres

N/A, Boyne City, MI

Two side by side lots in the Clevenger association with fantastic potential. The property has a slow gradual slope towards the water with great options for building sites. Leave the trees for added privacy or clear it out for a spacious yard. There are views of Lake Charlevoix that are better in the colder months. These two lots must be sold together. Be a part of this exceptional community that is so close to town and gives you all the conveniences you could ever need.



Essential Information

MLS® #	461420
Price	\$174,900
Acres	3.00
Type	Lots/Land
Sub-Type	Lots/Land

Community Information

Address	000 Orchard Drive
Subdivision	N/A
City	Boyne City
County	Charlevoix
State	MI
Zip Code	49712

Amenities

Features	Electric, Phone, Mixed Trees, Natural Gas, Cable TV, Under Ground Utilities, Hard Wood, Paved Road
----------	--

School Information

District Boyne City

Additional Information

Zoning Residential

HOA Fees 650

HOA Fees Freq. Year

Listing Details

This (property or listing) is courtesy of Pat O'Brien & Associates - Boyne City

The data relating to real estate on this web site comes in part from the Internet Data Exchange Program of the Northern Michigan MLS (NM-MLSX). Real estate listings held by brokerage firms other than Kidd & Leavy Real Estate are marked with the NM-MLSX logo and the detailed information about said listing includes the listing office. All information deemed reliable but not guaranteed and should be independently verified. All properties are subject to prior sale, change or withdrawal. Neither the listing broker(s) nor Kidd & Leavy Real Estate shall be responsible for any typographical errors, misinformation, misprints, and shall be held totally harmless. Northern Michigan MLS, Inc © All rights reserved. IDX information is provided exclusively for consumers' personal, non-commercial use, that it may not be used for any purpose other than to identify prospective properties consumers may be interested in purchasing.