

\$38,900 - Lot 11 High Pines Trail, Boyne City

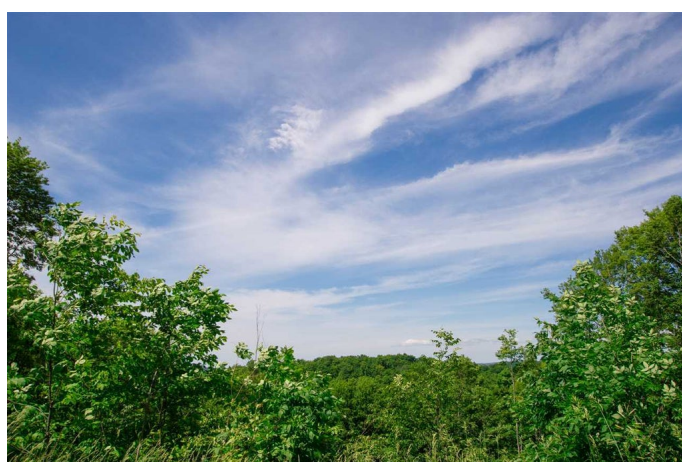
MLS® #463739

\$38,900

Bedroom, Bathroom,
Lots/Land on 1.50 Acres

N/A, Boyne City, MI

White Mountain is a beautiful site condo development centrally located between Boyne City, Walloon Lake, Boyne Mountain and Petoskey. Paved road, underground utilities, and reasonable by-laws in a well designed subdivision. This development has 55 acres of common space to help you enjoy that new Up North home. Contact your agent today for all of the details on this great development. See attached Master Deed. Lot 11 at White Mountain is a beautiful meadow lot with some large sugar maple trees.



Essential Information

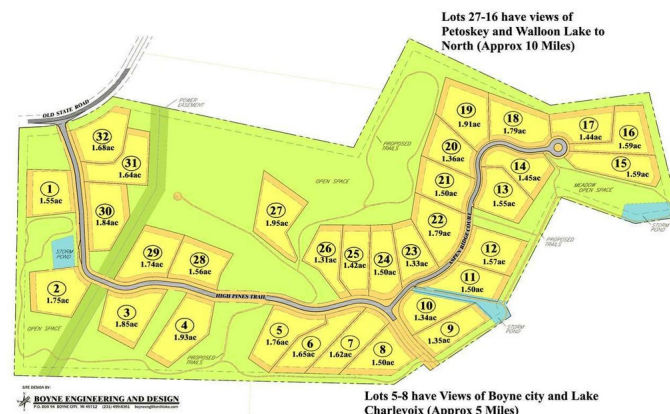
MLS® #	463739
Price	\$38,900
Acres	1.50
Type	Lots/Land
Sub-Type	Lots/Land

Community Information

Address	Lot 11 High Pines Trail
Subdivision	N/A
City	Boyne City
County	Charlevoix
State	MI
Zip Code	49712

Amenities

Features	Electric, Phone
----------	-----------------



School Information

District Boyne City

Additional Information

Zoning Residential

HOA Fees 365

HOA Fees Freq. year

Listing Details

This (property or listing) is courtesy of Christie's International Real Estate - Autograph

The data relating to real estate on this web site comes in part from the Internet Data Exchange Program of the Northern Michigan MLS (NM-MLSX). Real estate listings held by brokerage firms other than Kidd & Leavy Real Estate are marked with the NM-MLSX logo and the detailed information about said listing includes the listing office. All information deemed reliable but not guaranteed and should be independently verified. All properties are subject to prior sale, change or withdrawal. Neither the listing broker(s) nor Kidd & Leavy Real Estate shall be responsible for any typographical errors, misinformation, misprints, and shall be held totally harmless. Northern Michigan MLS, Inc © All rights reserved. IDX information is provided exclusively for consumers' personal, non-commercial use, that it may not be used for any purpose other than to identify prospective properties consumers may be interested in purchasing.